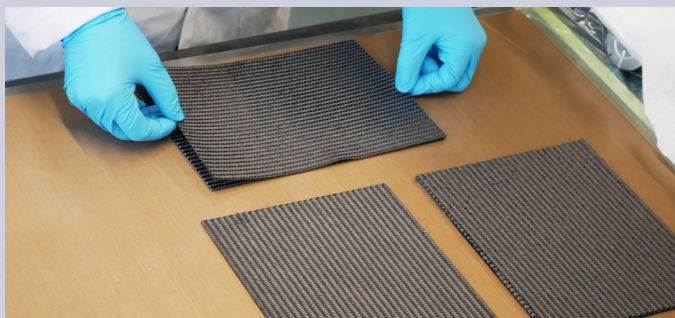


Newsletter - Expanding product lines and processes



CS02 - new product line!

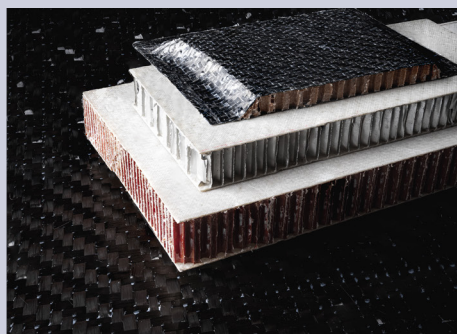
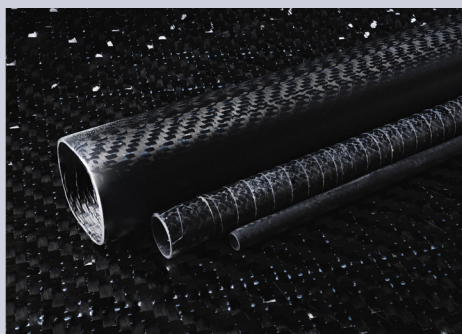
CS02 is a swift prepreg line to offer reduced cycle time for a press process while maintaining embedded healing. CS02 is targeted towards sports, leisure and industrial applications.

[Read the press release](#)



Infusion

CompPair's healable technology has been adapted to Liquid Composites Moulding processes! A section of a wind blade turbine has been manufactured in partnership with EPFL and KATZ. [Read the press release](#)



Semi-finished products

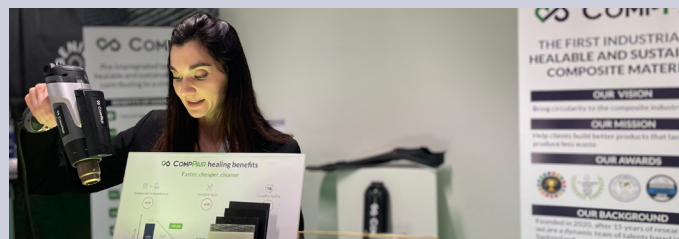
Bringing self-healing to semi-finished products such as panels, tubes, and more, CompPair can adapt its healable technology to various needs. Panels and tubes have demonstrated great repairability in the sports industry and beyond. Reach out to the team for technical information.

[Discover the outstanding panel repair](#)

RTM & Roll-to-roll processes

CompPair has received strong support to bring two new composite production processes to its portfolio: RTM and roll-to-roll processes. Complementary to its product lines for prepreps and infusion processing, this will open further market possibilities and opportunities.

[Find out more about the project](#)



JEC WORLD 2023

The CompPair team was rejoiced to attend their second edition of JEC World. The three days in Paris were a great success with several new demonstrators showed for the first time during the event, including aerospace, nautical and sports parts. During the composites-focused event we also officially launched two new product developments: the CS02 product line and infusion. Our stand received much interest over these few days, cumulating hundreds of visitors from the industry. Finally, Amaël, CEO, took part in a panel about the three Rs (Reduce, Reuse, Repair), highlighting the benefits of prioritising repair over other waste management solutions.

[Read more about our JEC visit](#)

Recent application cases



Our partners Altus and Omikron have manufactured a healable wheel cover for motorgliders. This aeronautical part is highly prone to damage events, during take-off and landing. The HealTech™ technology can solve this common issue. News to come after more flight hours!



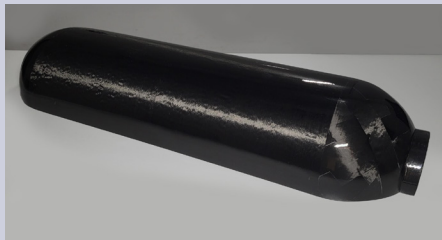
Along with Vitech Composites, we have designed carbon high-performance ski poles. HealTech™ poles can bring the same benefits as conventional composite ski poles, with an added healing innovation, extending the lifetime of composite parts and improved damping properties.



From our continuous work in the ski industry, we revealed the updated QST Salomon skis having improved design. Both in performance and sustainability, our HealTech™ products enable a top-sheet free ski, removing weight and improving resources use.



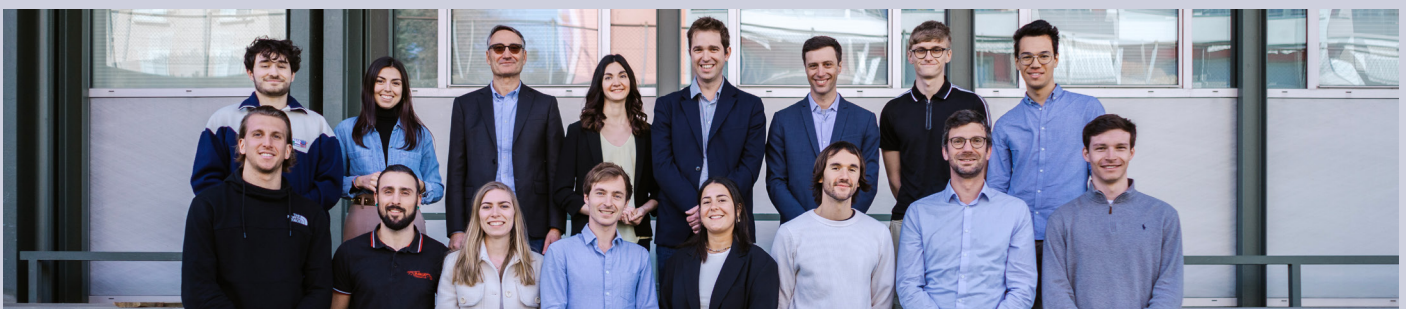
Highly active in the sports sector, we ventured to a new application: carbon swim fins. The embedded healing allows to repair damage created during use, along with bringing higher toughness properties.



A pressure vessel demonstrator was manufactured through an [ESA project](#). The next steps are to develop towpregs, specifically cryotank manufacturing. CompPair will ultimately provide cryotanks, enabling ultra-fast, non intrusive repair in the space sector.



CompPair and Kling Technology have manufactured a healable carbon rim to offer high quality performance to the automotive industry, allowing multiple repairs to extend the lifetime and quality of a wheel rim.



Team

CompPair has opened five full time positions to complement both the R&D and business teams. Stay updated to meet our new employees very soon! We regularly upload new opportunities for internships and full time positions. Visit our [careers page](#) to find offers.

CompPair in the media

The company has had several opportunities and invitations to appear in the media, see some of them below:

- [JEC Magazine article \(page 79\)](#)
- [Composites United article \(page 57\)](#)
- [Managing Composites Webinar](#)

For any new applications or opportunities, please reach out to us via contact@comppair.ch.